

PARKINSON | SOCIETY
SOUTHWESTERN
ONTARIO

is pleased to present to

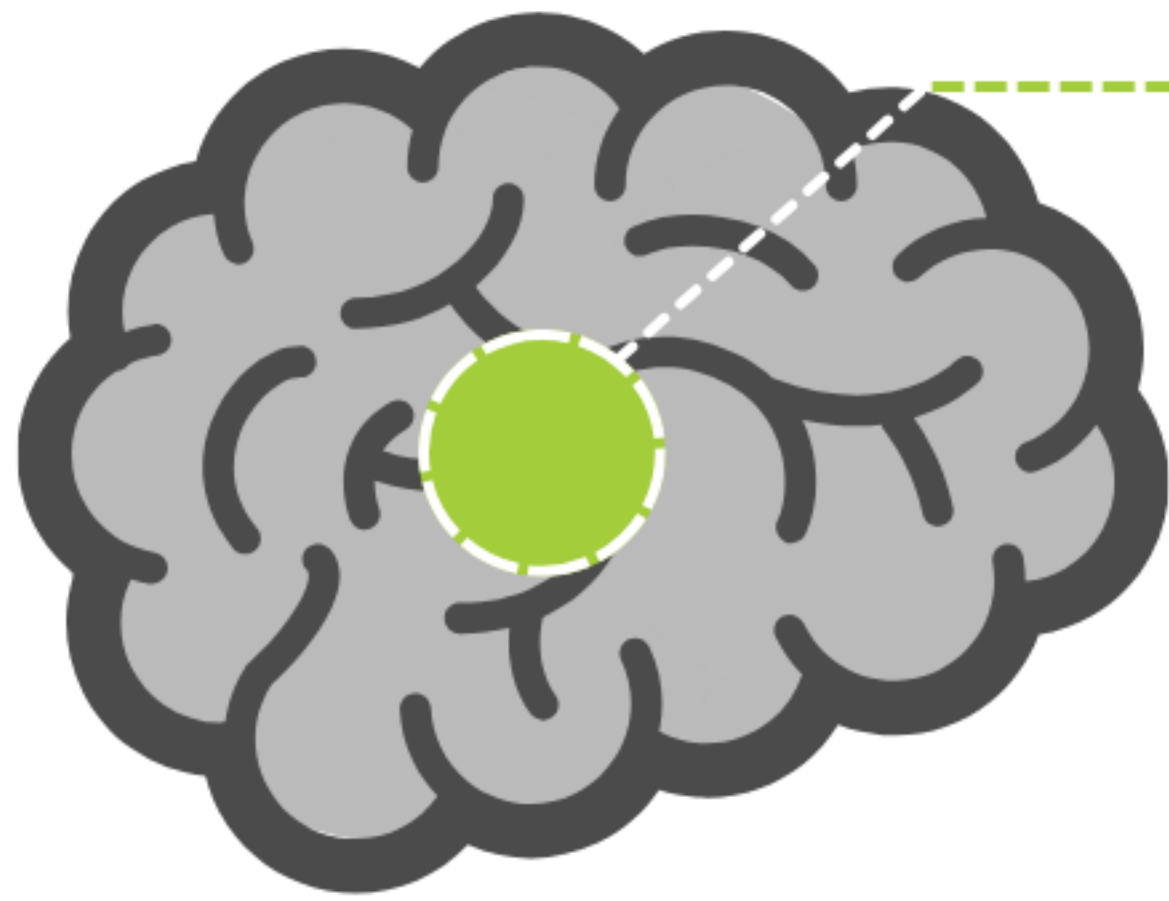
Tillsonburg
CONNECTED. ENRICHED. INSPIRED.

Hope is Close to Home

Information about Parkinson's Disease & Support Available

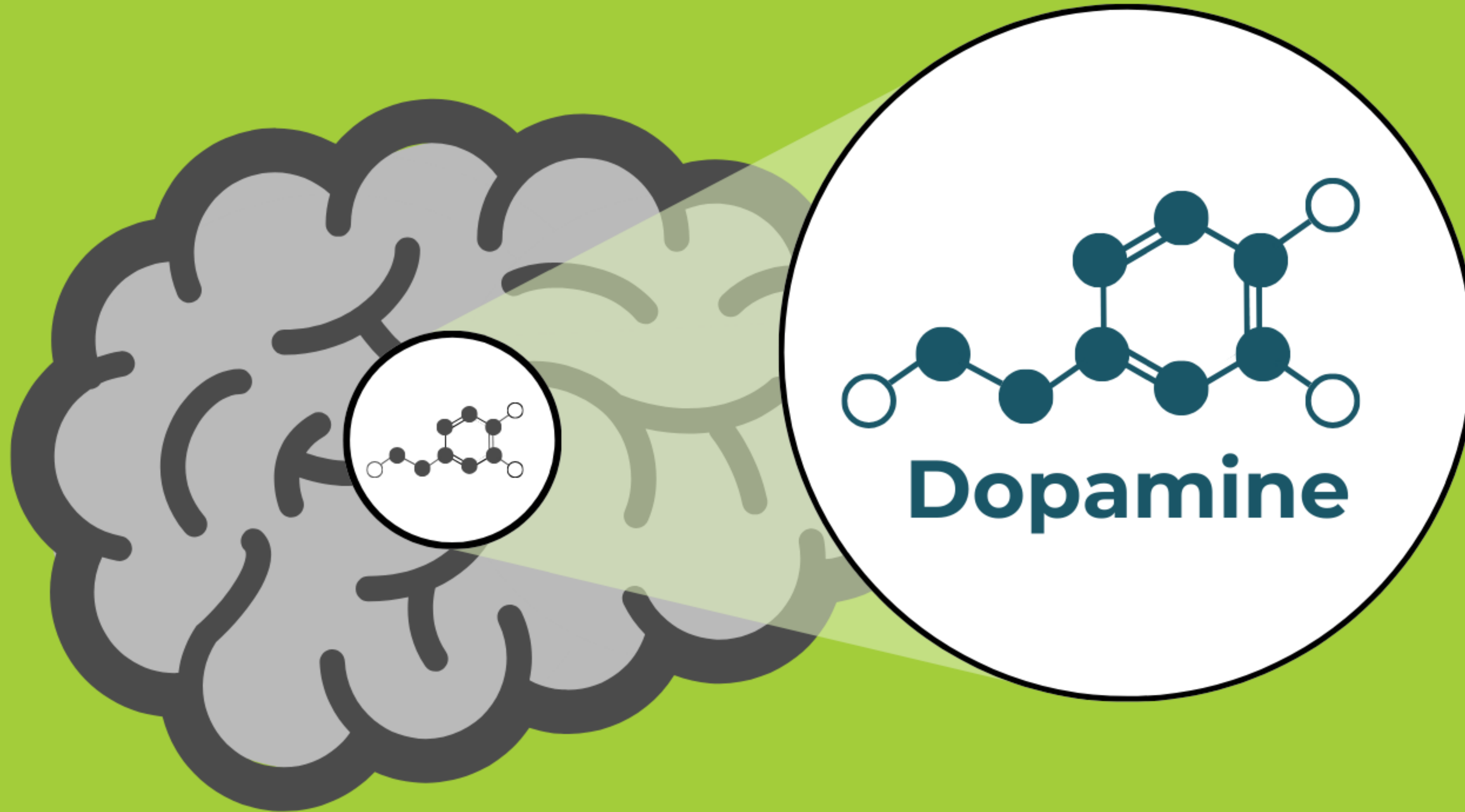


Parkinson's Disease



Parkinson's is a progressive, degenerative, neurological disorder **caused by the loss of neurotransmitter, dopamine.**

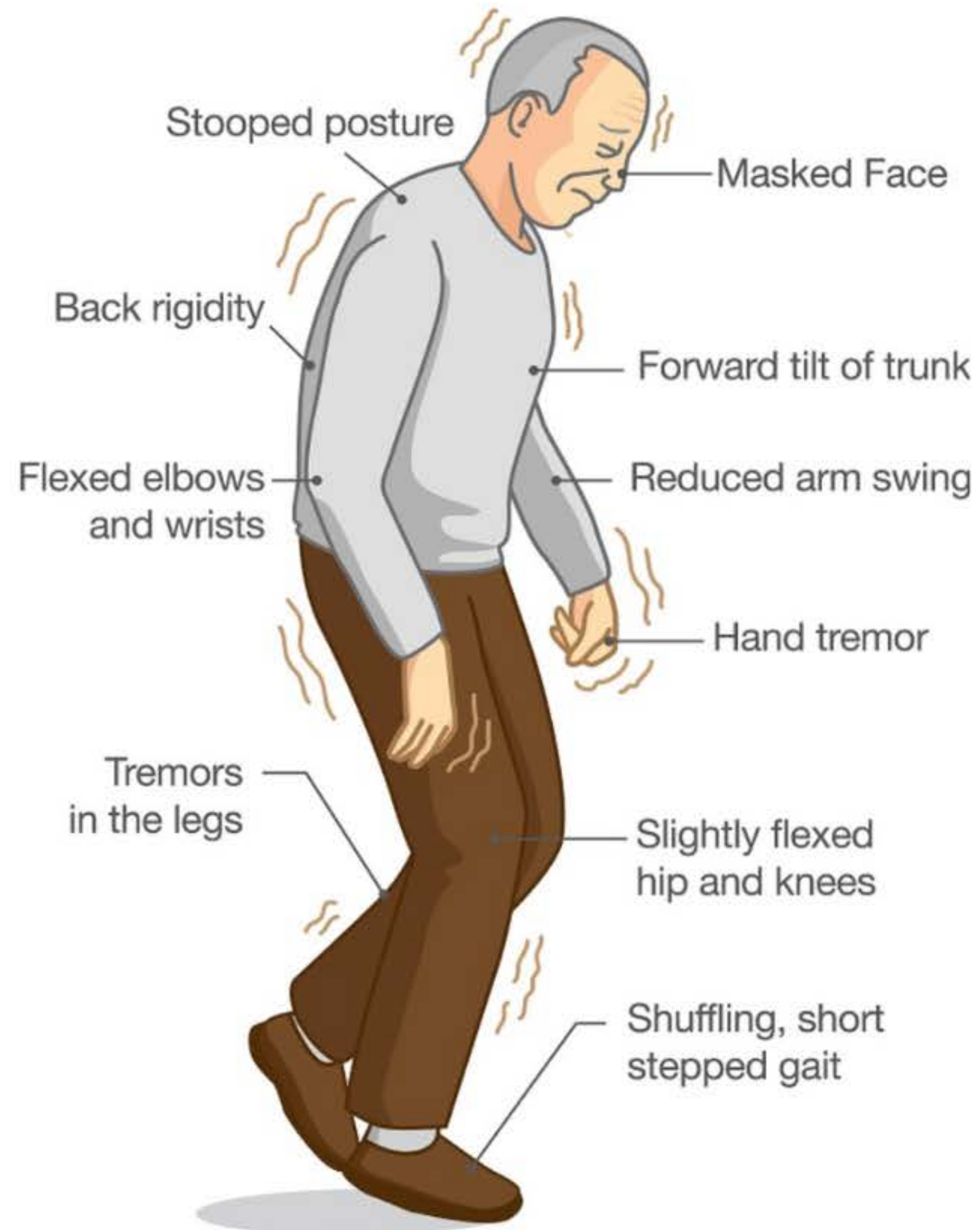
Parkinson's Disease



**Parkinson's is the
fastest growing
neurological disease
in the world.**



Motor Symptoms of Parkinson's



P Posture

A Akinesia

R Rigidity

T Tremors

Non- Motor Symptoms of Parkinson's



CENTRAL

- depression
- anxiety
- cognitive challenges
- dizziness/fainting



LUNGS

- upper airway obstruction
- abnormalities of ventilatory control



MUSCULAR

- weakness
- aches



INTESTINAL

- constipation



SKIN

- increased sweating



EYES

- forced closure of the eyelids (blepharospasm)



MOUTH

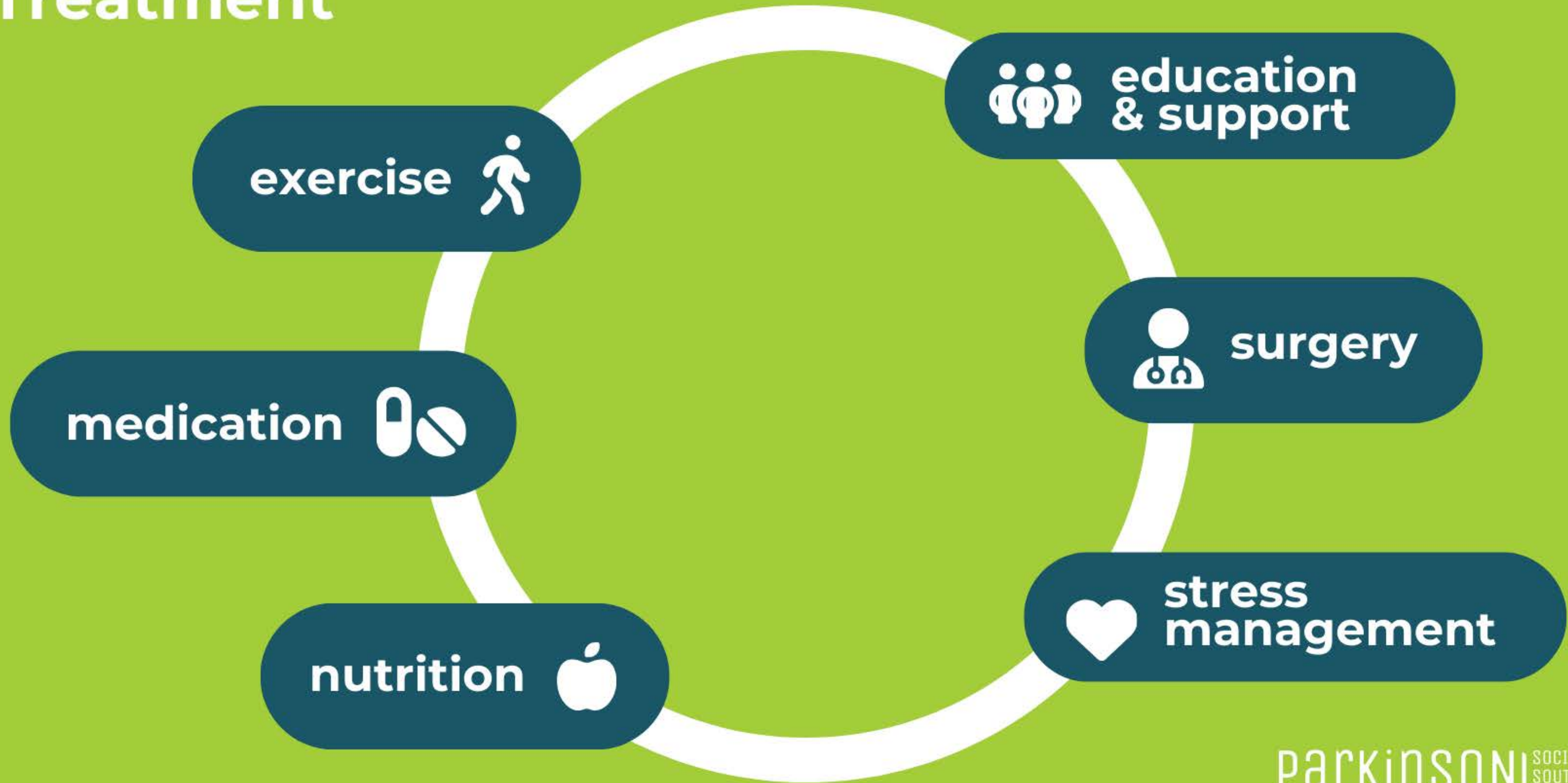
- difficulty speaking
- excessive salivation
- difficulty swallowing
- a soft or low voice



SYSTEMIC SYMPTOMS

- Tremor and slowness
- Impaired balance
- Small handwriting
- Sleepiness
- Trouble moving or walking
- Masked face

Treatment



About Parkinson Society Southwestern Ontario

Parkinson Society Southwestern Ontario

MISSION

PSSO enhances the quality of life and care for people living with Parkinson's in Southwestern Ontario.

VISION

To reach every person in Southwestern Ontario affected by Parkinson's.



Support

Support Groups
Funding
Referrals



Awareness



Counselling



Education



Programs



Research



Support

Support Groups
Funding
Referrals



Awareness



Counselling

Partnerships



Education



Programs



Research



Support

Support Groups
Funding
Referrals



Awareness



Counselling

Partnerships



Education



Programs

Boxing
Dance



Research



Support

Support Groups
Funding
Referrals



Awareness

Walk for PD
Parkinson's Day
Community events



Counselling

Partnerships



Education



Programs

Boxing
Dance



Research



Support

Support Groups
Funding
Referrals



Awareness

Walk for PD
Parkinson's Day
Community events



Counselling

Partnerships



Education

Conferences
Workshops
Webinars



Programs

Boxing
Dance



Research



**\$10,702* raised for
Oxford County Walk!**

* number could rise by end-of-year

**Our community
represents all of
Southwestern Ontario**

**We serve in 15 unique
and diverse regions**





HEATHER



NORTH
REGION

ROBIN



EAST
REGION



SAMANTHA



CENTRAL
REGION



WEST
REGION



STEPHEN

**People on the
ground, local,
to support you.**



Understanding more

We all need to grow in our knowledge of Parkinson's disease

- General public
- Family physicians
- Healthcare professionals
- Mental health
- Social workers

Thank you