

**LONG POINT REGION
CONSERVATION AUTHORITY**



ANNUAL REPORT

2024



Message from the Chair & General Manager..... 3
Memorial Forest..... 4
In Memoriam.....5
Protecting Life & Property.....6
 Flood Forecasting & Warning
 Source Water Protection
 Vittoria Dam
 Strategic Plans
 Planning & Regulations
Enhancing Watershed Health.....9
 Stewards of the Land
 Invasive Species Control
 Forest Management & Land Holdings
 Water Quality Monitoring
Connecting People to Nature.....13
 Backhouse Historic Site
 Education Programming
 Conservation Areas
 Community Relations
 Children’s Fishing Derbies
 Return of the War of 1812 Re-enactment
 Leighton & Betty Brown Scholarship
 Conservation Stewardship Award
Meet the Authority.....17
Facts & Figures.....19

Message from the Chair & General Manager

On behalf of the Board of Directors and staff, we are pleased to present this year's Annual Report, highlighting the progress and achievements of the Authority throughout 2024. Our continued commitment to protecting people and optimizing the health of the natural environment is essential in serving the residents of the watershed and delivering on our mission.

The Authority approved six key strategic documents in 2024, which will guide the organization's direction and decision-making to ensure organizational efficiency and effectiveness. The Watershed-based Resource Management and Conservation Land Strategies identify the Authority's goals for resource management and management of Authority properties. The 2024-2027 Strategic Plan refresh reaffirmed our mission. The Water Control Infrastructure Operational Plan and the Water Control Infrastructure Asset Management Plan will guide the Authority's operational and infrastructure renewal decisions for the 13 water control structures throughout the watershed.

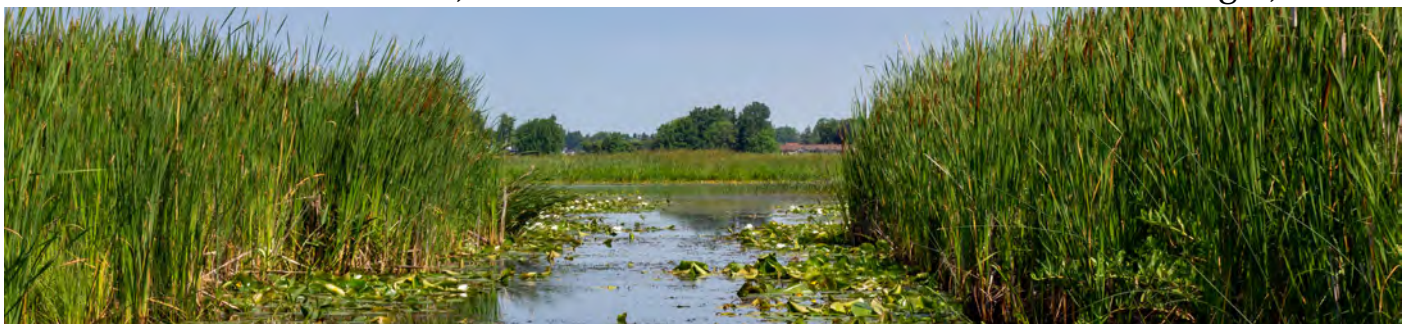
In 2024, planning staff issued 198 permits, the Flood Forecasting and Warning team issued 11 messages over 7 events, 44,727 trees were planted, 1,504 acres of cover crops were planted, 1,146 acres of land were treated for invasive species across 15 properties, and our conservation area campgrounds brought in 455 seasonal campers and 8,465 overnight stays.

The Authority made important progress throughout 2024 through the completion of corporate plans/studies and the delivery of programs and services. These achievements could not have been accomplished without the commitment of staff and the support of the Board of Directors.

We extend our sincere appreciation and thanks to everyone that contributed to another successful year.

Robert Chambers
Chair, LPRCA Board of Directors

Judy Maxwell
General Manager, LPRCA



Memorial Forest Dedication Service



The Memorial Forest is a forest located within Backus Heritage Conservation Area meant to act as a living tribute to loved ones in a unique and environmentally nurturing way. A service is held annually on the third Sunday in September where donors and families are invited to remember their loved ones in the form of creating new life by expanding the forest each year in their memory. In 2024, we honoured 142 loved ones in the presence of 130 guests. LPRCA Chair, Robert Chambers, took to the podium alongside Pastor Rev. Ted Smith to deliver the service. Throughout the event, Brenda Atkinson performed a series of musical performances.



In Memoriam



Stewart Patterson

It is with sorrow that LPRCA notes the passing of Stewart Patterson, Board of Directors member who served with LPRCA for six years, representing Haldimand County. Stew was heavily involved in his community being a member of the Jarvis Lions Club among a variety of other organizations. He had a great passion for bettering his community and the environment. He was an honored member of the LPRCA family and will be greatly missed.

It is with sadness that LPRCA notes the passing of Betty Chanyi. Betty served on LPRCA's Backus Museum Committee for nine years and on LPRCA's Board of Directors as a member representing Norfolk County for four years. Betty was heavily involved in the community as she immersed herself in a multitude of local groups in the Port Rowan area. Betty was a great supporter of LPRCA and will be dearly missed.



Betty Chanyi

Protecting Life & Property

Flood Forecasting & Warning

LPRCA’s Flood Forecasting and Warning team works on rotation 24/7/365 to fulfill conversation authorities’ core mandate of protecting people and property from natural hazards. The team monitors both lake and

riverine conditions across the watershed and delivers flood-related messages to the public for storm events. During storm events, there is coordination with municipal emergency response staff. In addition, the messages are also relayed to LPRCA’s corporate website and posted to all LPRCA social media channels. In 2024, the Long Point Region Watershed experienced a total of seven flood-related events with staff issuing 11 messages during the events. LPRCA also has a low-water response team that monitors levels by measuring precipitation, stream flow and groundwater levels. There were no advisories issued in 2024.

	2024	2023
Water Conditions Statements	6	5
Flood Watches	2	2
Flood Warnings	3	1

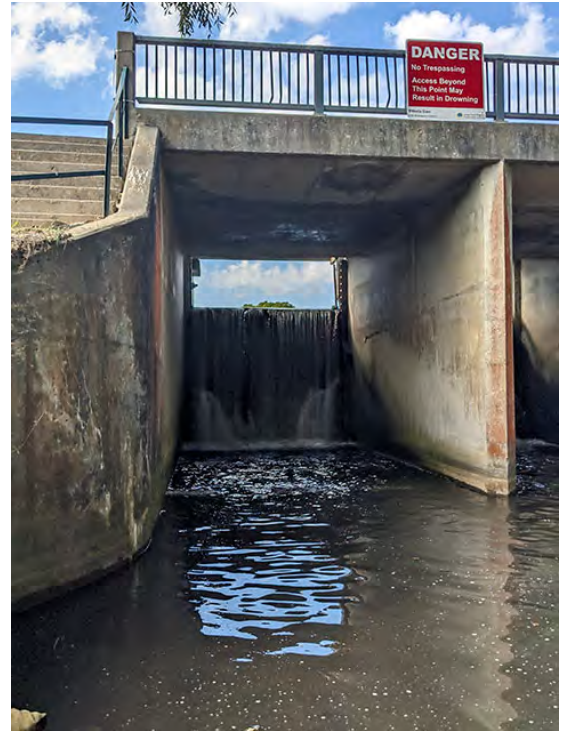
Source Water Protection

In accordance with the *Clean Water Act* of 2006, LPRCA works alongside Grand River CA, Catfish Creek CA, Kettle Creek CA and stake-holders, forming the Lake Erie Source Protection Region. Each authority has its own source protection plan that includes policies aimed to protect existing and future sources of municipal drinking water. The Long Point Source Protection Plan has been in effect since 2015 and aims to protect sources of drinking water from contamination and overuse. In accordance with *Ontario Regulation 287/07 s.52*, Long Point Region Source Protection Authority provides annual progress reports that report on the implementation status of significant drinking water threats within the region. The report is submitted to the Ministry of the Environment, Conservation and Parks.

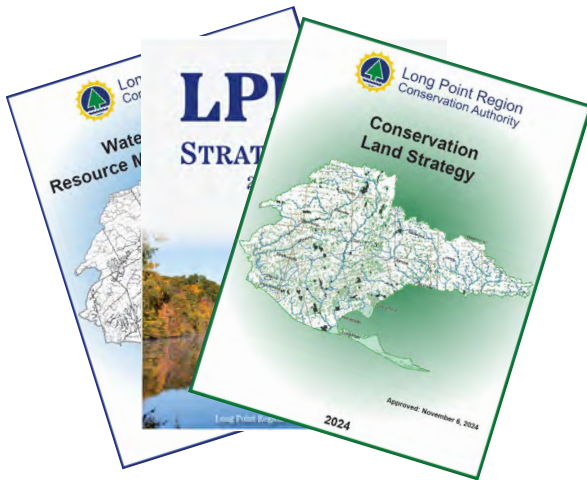


Vittoria Dam - Conservation Ontario Class Environmental Assessment

A Conservation Ontario Class Environmental Assessment on Vittoria Dam, initiated in 2023 following a Dam Safety Review completed in 2015, is now complete. The Notice of Project Completion was issued on August 26, 2024 and outlined the preferred alternative of slowly decommissioning the flow controls over a number of years. This process includes the removal of all available operational dam elements related to flow control including stop logs and gains, and the low-level sluice gate bypass system. Mitigating remobilization of sediment, providing time for flora and fauna to adjust, and protecting native Brook Trout is of utmost importance during this process. The next step is to develop a detailed plan and design to implement the decommissioning.



Update of Corporate Strategic Plans



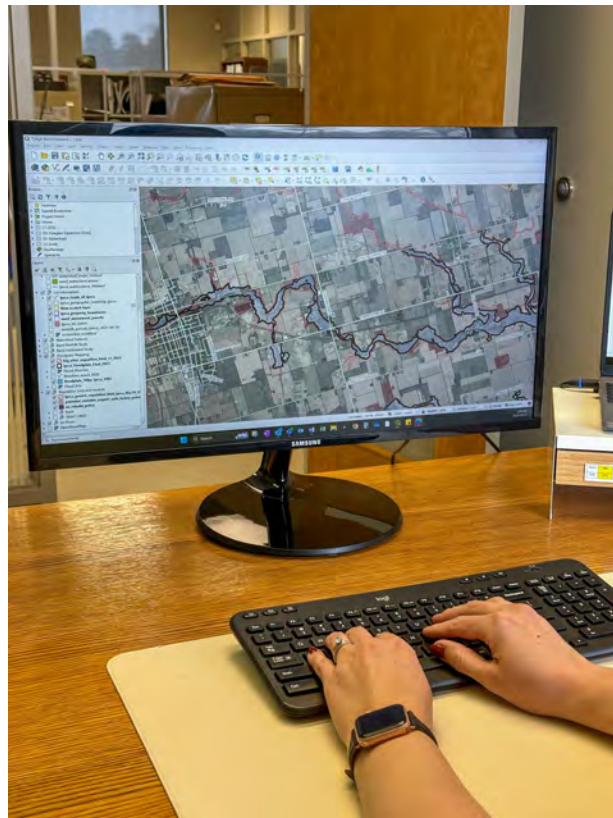
In 2024, LPRCA completed the required plans in accordance to *Ontario Regulation 686/21: Mandatory Programs and Services* made under the *Conservation Authorities Act*, along with a refresh of the LPRCA Strategic Plan. The plans will provide the Authority with a high-level framework that guides, manages and informs future decision-making.

The plans are as follows:

- Conservation Land Strategy;
- Watershed-based Resource Management Strategy;
- Water Control Infrastructure Asset Management Plan;
- Water Control Infrastructure Operational Plan;
- Ice Management Plan; and
- LPRCA Strategic Plan Refresh 2024-2027.

Planning & Regulations

The *Ontario Regulation 178/06: Development, Interference with Wetlands and Alterations to Shorelines and Watercourses* under the *Conservation Authorities Act*, legislation was revoked and the new *Ontario Regulation 41/24: Prohibited Activities, Exemptions and Permits* took effect on April 1, 2024. The new legislation, *Ontario Regulation 41/24: Prohibited Activities, Exemptions and Permits*, is used to regulate development in floodplains and hazardous areas within our watershed. Some changes are highlighted below:



- A number of development activities are exempt from requiring a permit and many are minor in nature and have size and/or location restrictions in order to be exempt;
- The regulated area around Provincially Significant Wetlands is reduced from 120 metres to 30 metres; and
- The Minister of Natural Resources has increased authority for permit decisions for issuing or denying a permit.

	2024	2023
Permit Applications Issued	198	245
Municipal Applications Reviewed and Comments Provided	84	117
Formal Pre-consultation Meetings	14	32

In 2024, LPRCA issued 198 permits with an average turnaround time for minor applications taking 5.2 calendar days and major applications taking 8.3 calendar days.

Enhancing Watershed Health

Stewards of the Land

LPRCA's landowner services are designed to help residents make the most out of their land by helping preserve and enhance the health of it. Services include:

- Cover crops;
- Tree planting;
- Restoration services;
 - Pit & mound forest restoration
 - Wetland enhancement/protection
 - Tall grass prairie planting
 - Riparian buffer zone installation
 - Species at risk protection
- Erosion control plans; and
- Rural water quality programs.

These best management practices benefit the watershed's health by filtering water to limit nutrient runoff, restoring the natural hydrology of the land, supporting biodiversity and more.



Through Forest Canada's 50 Million Program and Ontario Power Generation's Regional Biodiversity Program, LPRCA facilitated the planting of 44,727 trees throughout the watershed in 2024. LPRCA also planted 1,504 acres of cover crops in partnership with 19 agricultural producers in 2024. ALUS Norfolk coordinated funding from Environment and Climate Change Canada's Integrated Conservation Action Plan (ECCC/ICAP) to execute the cover crop planting. Staff designed two erosion control projects with funding from ECCC/ICAP and Canada-Ontario Agreement funding from the Ministry of Agriculture, Food, and Agribusiness coordinated by Kettle Creek Conservation Authority.

Invasive Species Control

In the summer of 2024, LPRCA expanded the Hemlock Woolly Adelgid (HWA) monitoring program initially established by the Invasive Species Centre, Natural Resources Canada and the Canadian Food Inspection Agency. The program monitors HWA using environmental DNA (eDNA). Forestry staff have installed eDNA traps in the Jacques Tract and Hay Creek Conservation Area. Staff have also inventoried and/or treated four properties across the watershed that are or could be affected by HWA.

LPRCA and Ontario Woodlot Association partnered to inventory and treat the Jacques Tract to help in developing an HWA management guide for land managers across the province.



With the support and funding from Environment and Climate Change Canada, forestry staff continue to survey and treat new forest tracts and conduct re-treatment spraying for invasive species. Throughout the year, 1,146 acres of land across 15 properties were treated for invasive species, with 718 acres receiving their first treatment.

Staff will continue to monitor for new and emerging invasive species that threaten the LPRCA watershed.

Forest Management & Land Holdings

To ensure the Authority continues its legacy of well managed forests, LPRCA uses good forestry practices that focus on ecologically sustainable forest management with emphasis on social, economic and ecological values.

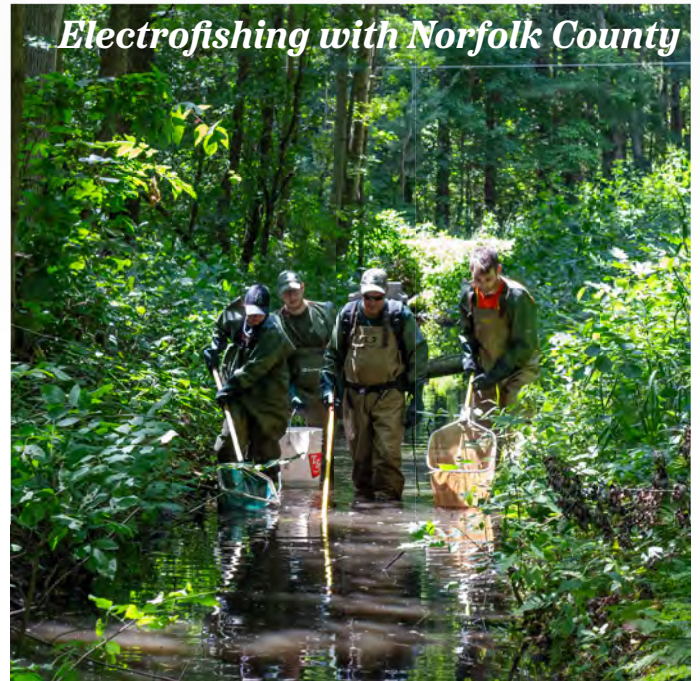
LPRCA owns over 11,000 acres of land, which includes:

- 90 forest tracts;
- Over 7,500 acres of managed forests tracts;
- 1,145 acres of protected and classified natural heritage woodlands; and
- 800 acres of uplands and marsh.



An ecologist was hired to ecologically survey 544 acres of land over six forest tracts to identify Species at Risk and Species of Concern. As per the *Endangered Species Act*, this is done to aid in the protection of these species and to promote habitat through upcoming harvesting operations. Using good forestry practices, certified tree markers marked trees for harvest. As a result, in 2024, the Authority issued and awarded two tenders.

Water Quality Monitoring



As a mandatory program and service, the Ministry of the Environment, Conservation and Parks (MECP) oversees the Provincial (Stream) Water Quality Monitoring Network (PWQMN) and the Provincial Ground Monitoring Network (PGMN), LPRCA monitors surface and ground water quality throughout the Long Point Region Watershed. Samples are collected throughout the year and sent for testing for parameters such as chloride, nutrients and metals. In 2024, samples for PWQMN were collected eight times at ten different locations. Samples for PGMN are collected annually and are drawn from 11 sampling wells. The information collected by analyzing these samples are added to a provincial dataset and the results are on the MECP website.

LPRCA also monitors the region's stream health by collecting samples using the protocol under the Ontario Benthos Bio-monitoring Network (OBBN). Samples are collected slightly different to monitor stream health, instead of taking a water sample and analyzing that, we collect the living things within the water itself. LPRCA gathered benthic invertebrate samples from 12 different sites around the watershed and sent the identification information to OBBN once the invertebrates were sorted. Staff also worked with Norfolk County staff, with funding from the Department of Fisheries and Oceans, to classify seven unrated drains. This is done by identifying different fish species (through the practice of electrofishing), identifying different plant species and assessing flows within the watercourses.

Connecting People to Nature

Backhouse Historic Site



Historic Site Interpreter at Cherry Valley School House

The Backhouse Historic Site welcomed visitors this summer to enjoy the historic village. An estimated 2,100 visitors made the journey to visit the site. The village was staffed with interpreters that facilitated programming such as tinsmithing, period demonstrations of school lessons, dressing and laundry, wool carding and spinning, and period appropriate games/crafts. Daily guided tours of the Mill took place when the village was open. At the Community Hall, the Weaver's from the Norfolk Fibre Arts Guild set up shop and gave spinning demonstrations for visitors to enjoy.

Education Programming



Interactive heritage and outdoor education programming saw a significant increase in the number of students registered in the 2024 school year. Contracts with two local school boards and an increase of out-of-contract classes brought in over 3,500 students who participated in education programming at Backus Heritage Conservation Area, nearly doubling the number of students from the previous year.

Two new program options were developed to expand the age range of students that can participate in programming. The programs include, *Dominion in Canada*, designed for grade 8 students and the *Backus Benthic Study*, designed for grades 9-12.

Conservation Areas



Haldimand CA Drainage Project



Monarch Restoration Habitat Site Prep

The 2024 season welcomed 8,465 overnight campers and 455 seasonal campers across LPRCA's five campgrounds. LPRCA education/heritage staff brought the educational workshops, *Turtle Talk* and *History on Wheels*, to all five campgrounds for campers to enjoy.

Backus Heritage CA, Norfolk CA and Waterford North CA all received washroom upgrades. The water access at Haldimand CA was improved, the well head was repaired and the park received drainage upgrades.

Park staff started on the prep work for a monarch habitat restoration site at Norfolk CA in partnership with the Canadian Wildlife Federation with funding from Environment and Climate Change Canada.

Community Relations

2024 was an exciting and fun year full of partnerships and community outreach. LPRCA hosted the Scouts of Port Dover at our Wetland Trail located in Backus Heritage CA to teach them how to properly plant trees. In June, LPRCA, alongside St. Clair Region CA, attended Tillsonburg Turtle Fest as information vendors. In partnership with Rogers TV, LPRCA collaborated with Ranger Em on her show, *Learning With Ranger Em*, showcasing the uniqueness of the Long Point Region. LPRCA staff attended the Elgin Children's Water Festival and the Carolinian Forest Festival with neighbouring Conservation Authorities, Kettle Creek CA, Catfish CA and Upper Thames CA. The Authority also collaborated with local newspapers and landowners to showcase landowner stewardship projects in the watershed.



Filming with Ranger Em for Rogers TV

Children's Fishing Derbies



The 2024 Deer Creek Children's Fishing Derby (Kids, Cops & Canadian Fishing Days) was a great success with a turnout of 100 participants! This annual event is one that brings the community together to have fun in the outdoors.



Return of the War of 1812 Re-Enactment

After a 4 year hiatus, the War of 1812 Re-enactment returned and took place September 6-8, 2024. The 40th anniversary of the annual event was a large success, with over 400 visitors in attendance. The event included 155 re-enactors, two battle re-enactments, period demonstrations and shopping at Sutlers row. Tea for Three, a musical trio, added to the 19th century ambiance with their time period appropriate musical performances. Dolly's Sandwiches, a food vendor, made sure the re-enactors and visitors were full of delicious food. The Port Rowan South Walsingham Heritage Association took up shop in the Cherry Valley School House to further educate visitors. Overall, the return of the event was a great success.



Leighton & Betty Brown Scholarship



Since 2007, the Lee Brown Marsh Management Committee and LPRCA have been awarding the Leighton & Betty Brown scholarship to deserving watershed students that are pursuing a degree in an environmental or natural resources field at a post-secondary level. In 2024, Jared McPherson was awarded with a \$1,000 scholarship to help him in his studies of Geography at the

University of Ottawa. The scholarship recognizes graduating high school students who demonstrate a passion for the environment and have achieved academic excellence. The scholarship was established to honour Leighton, former LPRCA employee, and Betty, Leighton's wife, who both made significant contributions to waterfowl management.

Conservation Stewardship Award

Brian Woolley is an active member in the community as Director of Woodhouse Township on the Norfolk Soil & Crop Improvement Association Board of Directors, an active participant in the Haldimand-Norfolk Beekeepers' Association and an upcoming Board member for the Norfolk Federation of Agriculture. Brian actively participates in environmentally responsible farm management practices on his property to mitigate erosion and improve soil health, amongst many other projects/hobbies, like beekeeping.

Brian's lifelong passion and dedication for the conservation of natural resources is the reason he was selected as the recipient of the Conservation Stewardship award for 2024. Thank you and congratulations Brian!



Meet the Authority

As a special-purpose environmental body, LPRCA works in partnership with our eight member municipalities, the provincial and federal governments, and the community to protect, restore and manage the natural heritage in the Long Point Region Watershed. The watershed is 2,782 km² with 255 km of Lake Erie Shoreline and a population of approximately 100,000. LPRCA owns approximately 11,000 acres of land, 13 water-control structures and operates five campgrounds and various parkettes within the watershed.

2024 LPRCA Staff

Judy Maxwell General Manager/Secretary-Treasurer

Aaron Le Duc Manager of Corporate Services

Leigh-Anne Mauthe Manager of Watershed Services

Lorrie Minshall Project Manager, Watershed Services

Saifur Rahman Manager of Engineering & Infrastructure

Kim Brown Marsh Manager

Paige Burke Accounting Clerk

Greg Butcher Grounds Maintenance

Bob Dewdney Marsh Operations Labourer

Evan Forbes Superintendent of CAs

Paul Gagnon Lands & Waters Supervisor

Alex Huber Receptionist

Brock Hussey Lands & Waters Technician

Isabel Johnson Resource Planner

Amanda Kaye Accounting Clerk

Ryan Kindt Workshop Technician

Jessica King Marketing & Social Media Associate

Dana McLachlan Executive Assistant

Barry Norman Workshop Operations Labourer

Sarah Pointer Curator

David Proracki Water Resources Analyst

Chris Reinhart Forestry Technician

Braedan Ristine Resource Planner

Darell Rohrer Workshop Operations Labourer

Frank Schram Workshop Supervisor

Jeffery Smithson Workshop Operations Labourer

Nicole Sullivan HR Associate/Receptionist

Debbie Thain Supervisor of Forestry

Alanna Yungblut Heritage Programmer

As well as our many seasonal staff and summer students.



2024 Board of Directors

Chair

Robert Chambers

Vice Chair

Dave Beres

Directors

Shelly Ann Bentley	Haldimand County
Doug Brunton	Norfolk County
Michael Columbus	Norfolk County
Tom Masschaele	Norfolk County
Chris Van Paassen	Norfolk County
Jim Palmer	Township of Norwich
Stewart Patterson	Haldimand County
Rainey Weisler	Municipality of Bayahm/ Township of Malahide
Peter Ypma	Township of South-West Oxford

Lee Brown Marsh

Management Committee

Tom Haskett, Chair
Doug Brunton
Larry Chanda
Michael Columbus
Lou Kociuk

Backus Museum Committee

Heather Smith, Chair
Betty Chanyi, Past Chair
Daves Beres
Michael Columbus
Dene Elligson
Tom Masschaele
Julie Stone
Madaline Wilson

Farewell, Dana!

Dana McLachlan started her journey at LPRCA in 2007 and served as the Executive Assistant for nearly 18 years. She is a true testament to what a loyal and hardworking employee looks like. She was someone you could always count on for a helping hand. Her kindness and bubbly personality filled the LPRCA team with a sense of joy and unity that will always hold a special place in our hearts. The LPRCA team wishes her nothing but happiness and a sense of fulfillment in her retirement.

Thank you for your service Dana, enjoy your retirement!



Facts & Figures

Financial Highlights

2024 Revenue

Municipal Levy - Operating	\$ 2,145,963	33%
Municipal Levy - Capital	\$ 216,424	2%
Provincial Funding	\$ 35,229	1%
Fees	\$ 3,542,876	56%
Forestry Sales	\$ 505,027	8%
Total	\$ 6,445,519	100%

2024 Expenditures

Planning and Watershed Services	\$ 1,130,016	21%
Backus Heritage CA	\$ 308,323	6%
Maintenance Operations Services	\$ 900,671	15%
Forestry Services	\$ 398,958	7%
Conservation Parks	\$ 1,499,324	26%
Corporate Services	\$ 1,368,009	25%
Total	\$ 5,605,301	100%

Use of 2024 Operating Levy

Corporate Services	\$ 958,646	36%
Planning and Watershed Services	\$ 536,509	29%
Backus Heritage CA	\$ 5,582	5%
Maintenance Operations Services	\$ 645,226	30%
Total	\$ 2,145,963	100%

Share of 2024 Operating Levy

Haldimand County	\$308,299	14%
Norfolk County	\$1,102,752	51%
Oxford County	\$469,365	22%
Brant County	\$152,855	7%
Bayham Municipality	\$97,190	5%
Malahide Township	\$15,502	1%
Total	\$2,145,963	100%



Member of the
Conservation Ontario Network

@lpr_ca 
@LongPointConservation 
@longpointca 
@lprca 



4 Elm Street, Tillsonburg, ON N4G 0C4
519-842-4242 | 1-888-231-5408
conservation@lprca.on.ca
www.lprca.on.ca

THANK YOU TO OUR MUNICIPAL PARTNERS

Municipality of Bayham | County of Brant | Haldimand County
Town of Tillsonburg | Township of Malahide | Norfolk County
Township of Norwich | Township of South-West Oxford