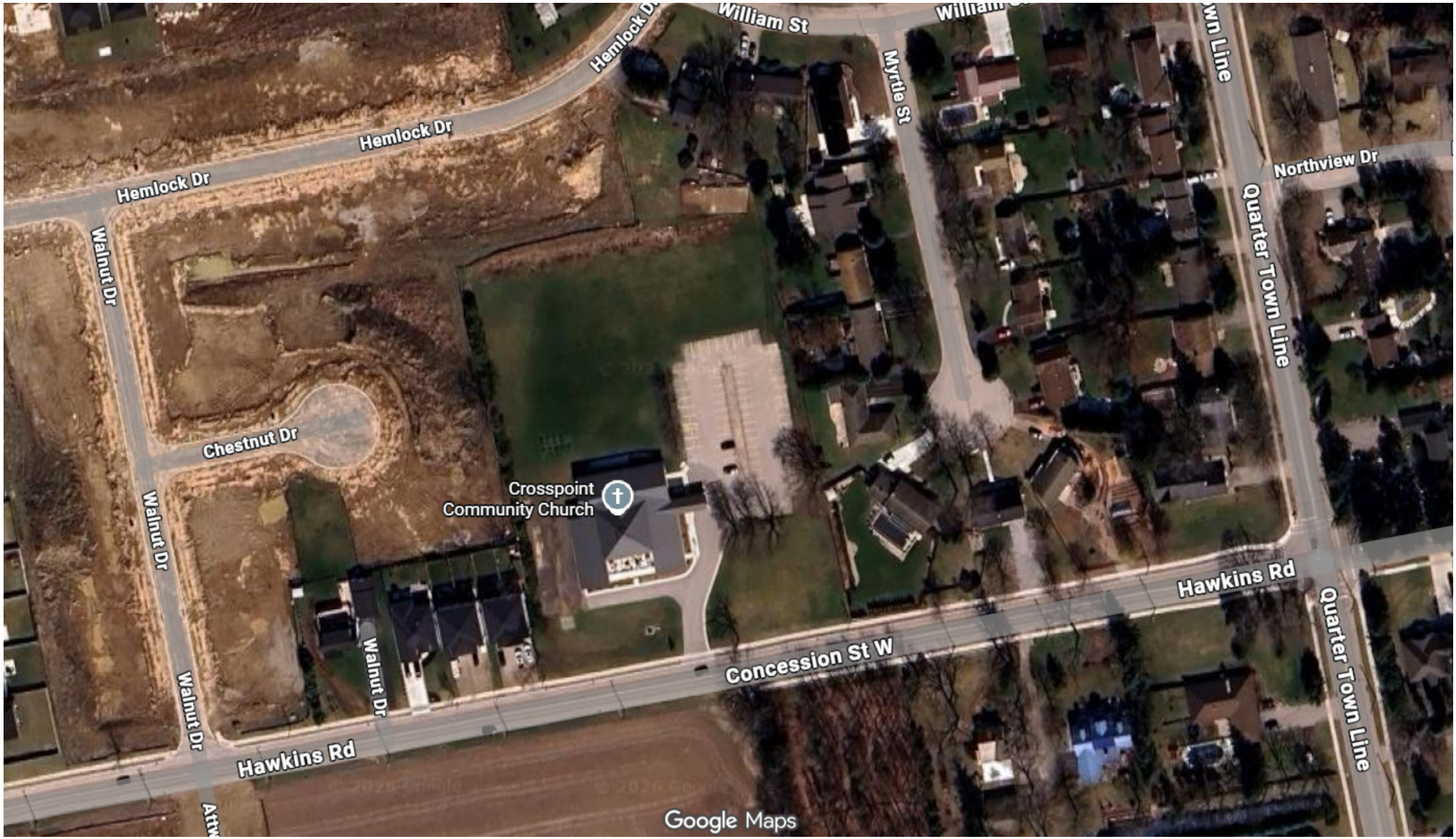


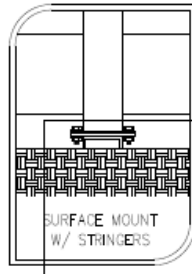
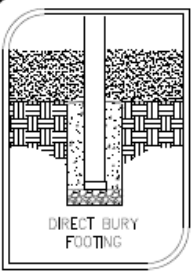
Google Maps



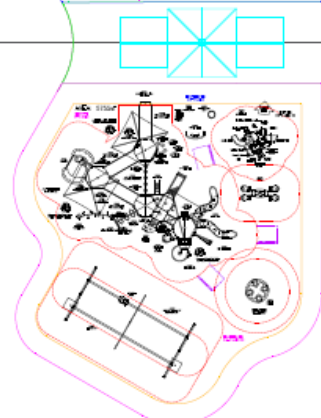
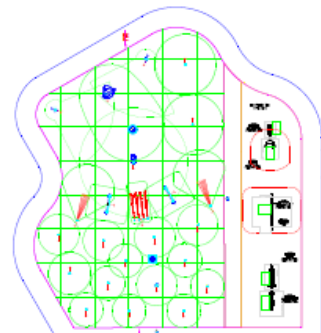
Google Maps



## **Play and Splash Area Project**



The play components identified on this plan are IPEMA certified. The use and layout of these components conform to the Canadian Standards Association (CSA) Standard CAN/CSA-2614-14.



TOTAL ELEVATED PLAY COMPONENTS	10		
TOTAL ELEVATED COMPONENTS ACCESSIBLE BY RAMP	0	REQUIRED	0
TOTAL ELEVATED COMPONENTS ACCESSIBLE BY TRANSFER	0	REQUIRED	0
TOTAL ACCESSIBLE GROUND LEVEL COMPONENTS SHOWN	6	REQUIRED	3
TOTAL DIFFERENT TYPES OF GROUND LEVEL COMPONENTS	4	REQUIRED	1

TOTAL ELEVATED PLAY COMPONENTS	16		
TOTAL ELEVATED COMPONENTS ACCESSIBLE BY RAMP	8	REQUIRED	0
TOTAL ELEVATED COMPONENTS ACCESSIBLE BY TRANSFER	16	REQUIRED	8
TOTAL ACCESSIBLE GROUND LEVEL COMPONENTS SHOWN	6	REQUIRED	5
TOTAL DIFFERENT TYPES OF GROUND LEVEL COMPONENTS	3	REQUIRED	3

IT IS THE MANUFACTURER'S OPINION AND INTENT THAT THE USE AND LAYOUT OF THESE COMPONENTS CONFORM WITH THE CANADIAN STANDARDS ASSOCIATION (CSA) STANDARD CAN/CSA-2614.

IT IS THE MANUFACTURER'S OPINION THAT THE PLAY AREA DOES CONFORM TO THE CAN/CSA-2614 AND IS SUITABLE FOR ACCESSIBILITY ASSUMING AN ACCESSIBLE PATHWAY INCLUDING IS PROVIDED AS INDICATED ON THIS DRAWING AND THE USE OF THE AREA.

Crosspoint  
Community Church  
Tillsonburg, On

ABC RECREATION LTD.  
Tony DeJongh

THIS PLAY AREA EQUIPMENT IS DESIGNED FOR AGE 8m-12YEARS

THIS CONCEPTUAL PLAN WAS BASED ON INFORMATION AVAILABLE TO US PRIOR TO CONSTRUCTION. DETAILED SITE INFORMATION INCLUDING SITE DIMENSIONS, TOPOGRAPHY, EXISTING UTILITIES, SOIL CONDITIONS, AND DRAINAGE SOLUTIONS SHOULD BE OBTAINED, EVALUATED, & UTILIZED IN THE FINAL DESIGN.

CHOOSE A PROTECTIVE SURFACING MATERIAL THAT HAS A CRITICAL HEIGHT VALUE OF AT LEAST THE HEIGHT OF THE HIGHEST ACCESSIBLE PART/FALL HEIGHT OF THE ADJACENT EQUIPMENT. (SEE CANADIAN STANDARDS ASSOCIATION (CSA) STANDARD CAN/CSA-2614-14, SECTION 10: SURFACING.)

SMARTPLAY

DRAWING #

250906-r1

©COPYRIGHT: 09/09/2025  
LANDSCAPE STRUCTURES, INC.  
DESIGNED BY: SRJ



601 7th STREET SOUTH - P.O. BOX 198  
DELANO, MINNESOTA 55328  
PH: 1-800-328-0035 FAX: 1-763-972-6091







Playground





landscape  
structures

Crosspoint Community Church

250906-r1 • 10.21.2025



© 2025 Landscape Structures. All Rights Reserved



landscape  
structures

Crosspoint Community Church

250906-r1 • 10.21.2025



© 2025 Landscape Structures. All Rights Reserved



Crosspoint Community Church

250906-r1 • 10.21.2025



© 2025 Landscape Structures. All Rights Reserved



landscape  
structures

Crosspoint Community Church

250906-r1 • 10.21.2025

ABC  
recreation

© 2025 Landscape Structures. All Rights Reserved



landscape  
structures

Crosspoint Community Church

250906-r1 • 10.21.2025

ABC  
recreation

© 2025 Landscape Structures. All Rights Reserved



 landscape  
structures

Crosspoint Community Church

250906-r1 • 10.21.2025

 **ABC**  
recreation

© 2025 Landscape Structures. All Rights Reserved



Crosspoint Community Church

250906-r3 • 2.12.2026



© 2026 Landscape Structures. All Rights Reserved



*lsr* landscape  
structures

Crosspoint Community Church

250906-r3 • 2.12.2026

 **ABC**  
recreation

© 2026 Landscape Structures. All Rights Reserved





*landscape*  
structures

Crosspoint Community Church

250906-r3 • 2.12.2026

 **ABC**  
recreation

© 2026 Landscape Structures. All Rights Reserved



*LS* landscape  
structures

Crosspoint Community Church

250906-r3 • 2.12.2026

 **ABC**  
recreation

© 2026 Landscape Structures. All Rights Reserved











Crosspoint Community Church

250906 • 9.15.2025



© 2025 Landscape Structures. All Rights Reserved



Crosspoint Community Church

250906 • 9.15.2025



© 2025 Landscape Structures. All Rights Reserved



Fitness



Crosspoint Community Church



250906-r1 • 10.21.2025

© 2025 Landscape Structures. All Rights Reserved



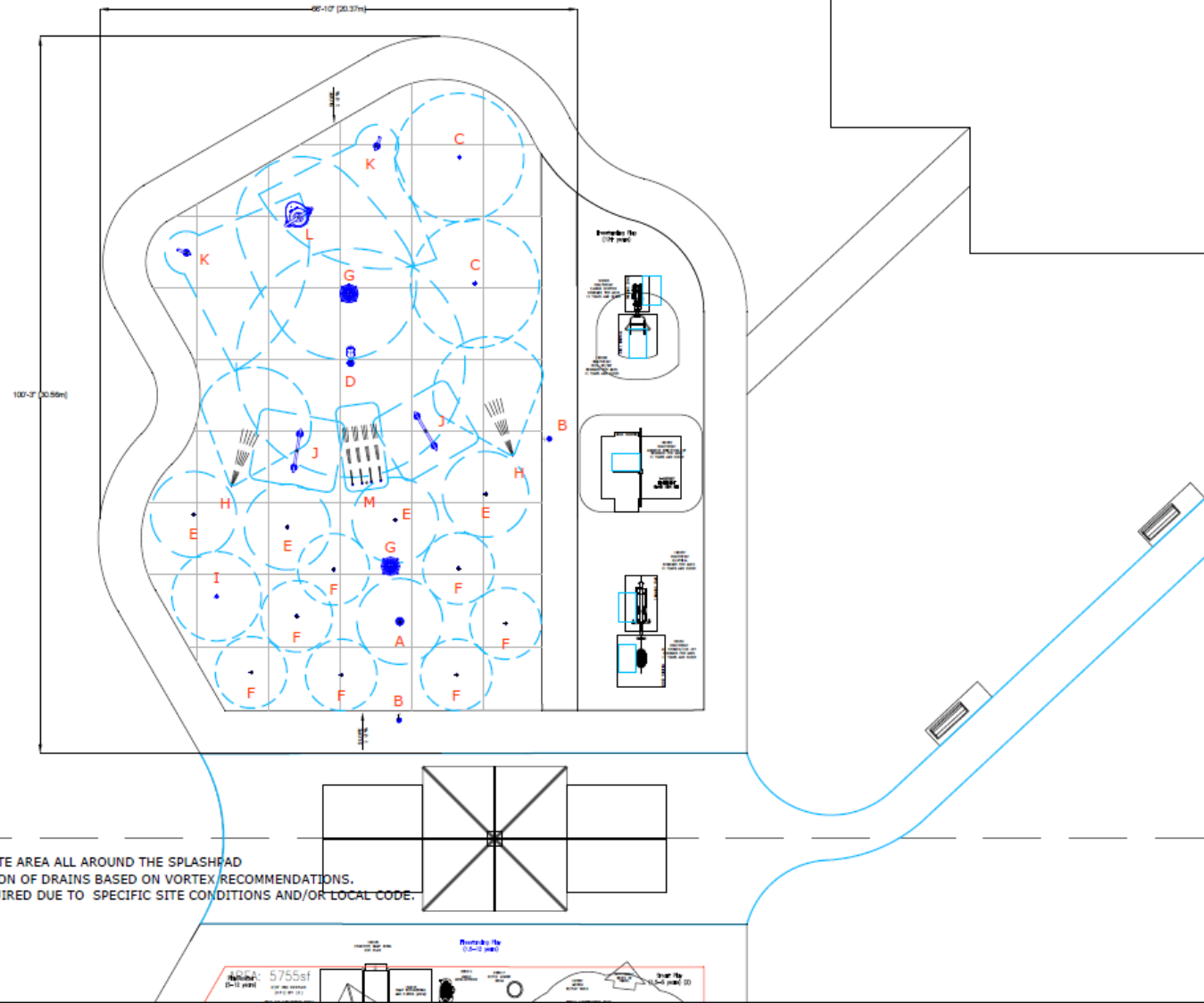
Splashpad

### SPLASHPAD DIMENSION

TOTAL AREA : 5578 ft<sup>2</sup> 518m<sup>2</sup>  
 SPRAY AREA : 4189 ft<sup>2</sup> 389m<sup>2</sup>  
 GRID SIZE : 10 x 10ft 3 x 3m

### PRODUCT LEGEND

REF	PRODUCT	QTY	GPM	LPM	
A	Aqua Dome N°1 VOR 0555	1	14.0	52.9	
B	Activator N°4 VOR 0622	2	0.0	0.0	
C	Water Bloom N°1 VOR 0322	2	18.0	68.0	
D	Cattail Twirl VOR 7782	1	3.0	11.3	
E	Fountain Spray N°2 VOR 7676	4	12.0	45.4	
F	Jet Stream N°1 VOR 7512	7	17.5	66.2	
G	Playsafe Drain N°1 VOR 1001	2	0.0	0.0	
H	Rooster Tail VOR 0303	2	18.0	68.0	
I	Sparkle N°1 VOR 0324	1	3.0	11.3	
J	Spray Loop VOR 0519	2	15.0	56.7	
K	Tube N°1 VOR 0220	2	10.0	37.8	
L	Twinsplash VOR 7242	1	12.0	45.4	
M	Water Tunnel N°2 VOR 0309	1	12.0	45.4	
			QTY	GPM	LPM
TOTAL		28	134.5	508.4	



Crosspoint Community Church Splashpad, ON  
 45012 Version\_A  
 Nov 05,2025



### SPLASHPAD LAYOUT DRAWING

SCALE : 1/16"=1'  
 11" X 17" ARCH A1



COPYRIGHT VORTEX AQUATIC STRUCTURES INTERNATIONAL 2006-THIS DOCUMENT AND THE IDEAS, RENDERINGS AND OTHER CONTENTS CONTAINED THEREIN ARE THE SOLE PROPERTY OF VORTEX AQUATIC STRUCTURES INTERNATIONAL AND MAY NOT BE DISSEMINATED, COPIED, REPRODUCED OR OTHERWISE USED WITHOUT PRIOR WRITTEN CONSENT OF VORTEX AQUATIC STRUCTURES INTERNATIONAL



All 3D renders shown are for illustration purposes only. Actual colors, textures and finishes may differ from renders.



Crosspoint Community Church Splashpad, ON  
Version A - 45012

Splashpad®  
View 1



All 3D renders shown are for illustration purposes only. Actual colors, textures and finishes may differ from renders.



Crosspoint Community Church Splashpad, ON  
Version A - 45012

Splashpad®  
View 2



All 3D renders shown are for illustration purposes only. Actual colors, textures and finishes may differ from renders.



Crosspoint Community Church Splashpad, ON  
Version A - 45012

Splashpad®  
View 3



All 3D renders shown are for illustration purposes only. Actual colors, textures and finishes may differ from renders.



Crosspoint Community Church Splashpad, ON  
Version A - 45012

Splashpad®  
View 4



All 3D renders shown are for illustration purposes only. Actual colors, textures and finishes may differ from renders.



Crosspoint Community Church Splashpad, ON  
Version A - 45012

Splashpad®  
View 5

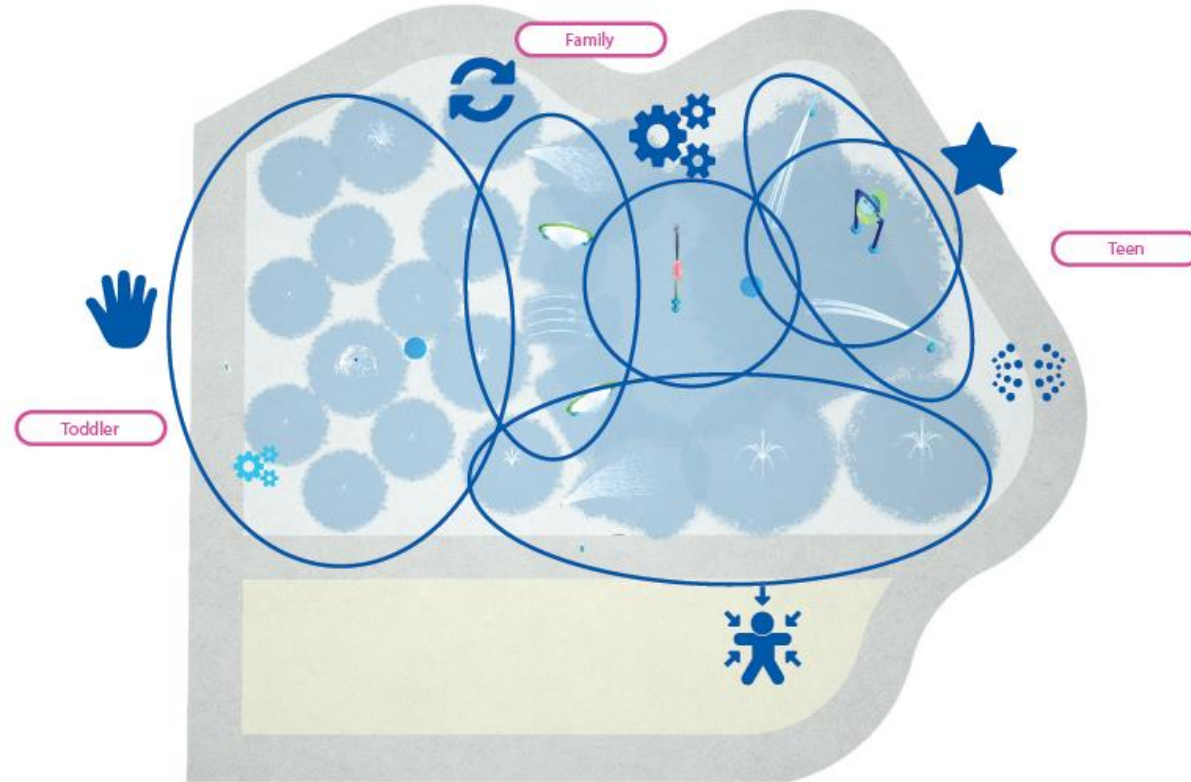


# Play Value Planning

Aquatic play may feel spontaneous, but it actually requires lots of planning. We design every play experience to keep families engaged, boost dwell times, and increase return visits.

To build lasting memories among moms, dads, and little ones of all abilities, we carefully consider how to integrate products that cater to everything from the location's footprint and capacity to its demographics and theming objectives.

-  **Sensory**  
Stimulates & develops multiple sense experiences
-  **Spray**  
Encourages teamwork & competition
-  **Tactile**  
Promotes discovery of water textures
-  **Iconic**  
Features interactive fun & serves as a social gathering place
-  **Circuit**  
Encourages physical development
-  **Flow**  
Develops discovery & learning
-  **Kinetic**  
Features interactive fun & encourages movement
-  **Misty**  
Cloud-like experience gives refreshing thrills





Shelter

# poligon<sup>®</sup>

A Division of PORTERCORP 4240 N. 136th AVE HOLLAND, MI 49424 (616) 399-1943  
 Designs and colorations of Poligon buildings are protected under copyright laws and patents  
 and may not be used in the construction or design of a building that is not supplied by Poligon.  
 Copyright laws protect the style and visual appearance of the structure and its patents may protect other parts of the design.  
 PATENTED AND/OR PATENTS PENDING COPYRIGHT 2013 PORTERCORP HOLLAND, MI 49424

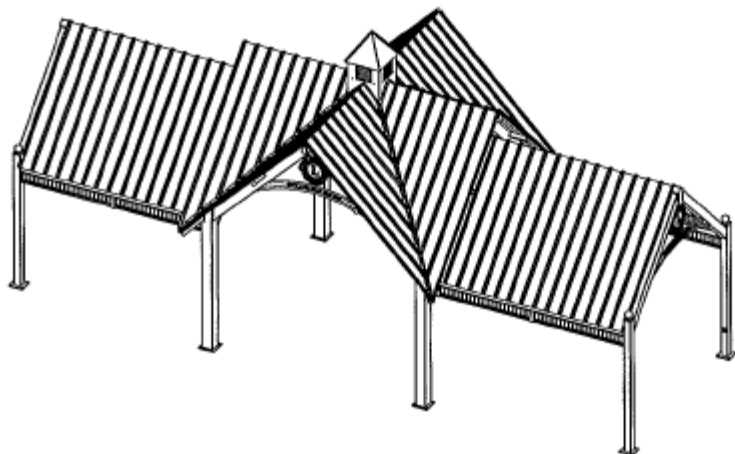
PROJECT NAME: PINAFORE PARK

PROJECT LOCATION: ST. THOMAS, ON

BUILDING TYPE: CGN 20x15

ROOF TYPE: MULTI-RIB OVER T & G

JOB NUMBER: 50417



## DRAWING LIST:

SHEET NUMBER	DRAWING DESCRIPTION
CS	COVER SHEET
1	ARCHITECTURAL ELEVATIONS
2-2.2	ANCHOR AND FOOTING LAYOUT / DETAILS
3-3.1	STRUCTURAL FRAMING PLAN
4-4.4	FRAME CONNECTION DETAILS
5-5.4	ROOF LAYOUT
6-6.3	ROOF CONNECTION DETAILS

**CLIMATIC LOADS:**  
 THIS SHELTER HAS BEEN CHECKED FOR CLIMATIC LOADS FOR ST. THOMAS, ONTARIO. THE APPLICABLE CLIMATIC LOADS ARE AS FOLLOWS:  
 GROUND SNOW LOAD: 1.4 kPa  
 ASSOCIATED RAIN LOAD: 0.4 kPa  
 HOURLY WIND PRESSURE (150): 0.48 kPa  
 SEISMIC LOAD: NON-CONTROLLING COMPARED TO WIND.

## MANUFACTURER NOTES:

### MATERIALS:

DESCRIPTION	ASTM DESIGNATION
TUBE STEEL	A500 (GRADE B)
SCHEDULE PIPE	A53 (GRADE B)
RMT PIPE	A519
LIGHT GAUGE COLD FORMED	A1003 (GRADE 60)
STRUCTURAL STEEL PLATE	A36
ROOF PANELS (STEEL)	A663
ANCHOR BOLTS	SEE SHEET 2.1

### GENERAL NOTES:

UNLESS NOTED OTHERWISE, THIS STRUCTURE WAS DESIGNED TO ONLY SUPPORT WHAT IS SHOWN ON THESE DRAWINGS. POLIGON MUST BE CONTACTED IF ANYTHING ELSE IS TO BE ATTACHED TO THIS STRUCTURE (WALLS, COLUMN WRAPS, RAILINGS, ETC.) SO THE DESIGN OF THIS STRUCTURE CAN BE REVIEWED AND POSSIBLY REVISED.

UNLESS NOTED OTHERWISE, THIS STRUCTURE WAS DESIGNED ASSUMING A 20' SEPARATION BETWEEN ANY ADJACENT STRUCTURE WITH AN EAVE HEIGHT EQUAL TO OR GREATER THAN THE EAVE HEIGHT OF THIS STRUCTURE. IF THAT SEPARATION DOES NOT EXIST, POLIGON MUST BE CONTACTED SO THE DESIGN OF THIS STRUCTURE CAN BE REVIEWED AND POSSIBLY REVISED.

STRUCTURAL STEEL SHALL BE DETAILED, FABRICATED, AND ERECTED IN ACCORDANCE WITH THE LATEST EDITION OF THE AMERICAN INSTITUTE OF STEEL CONSTRUCTION (AISC) SPECIFICATION MANUAL.

ALL WELDING IS PERFORMED BY AMERICAN WELDING SOCIETY CERTIFIED WELDERS AND CONFORMS TO THE LATEST EDITION OF AWS D1.1 OR D1.3 AS REQUIRED.

PARTS SHOWN MAY BE UPGRADED DUE TO STANDARDIZED FABRICATION, REFER TO THE SHIPPING BILL OF MATERIALS FOR POSSIBLE SUBSTITUTIONS.

FOR PROPER FIELD INSTALLATION OF THE BUILDING IT IS RECOMMENDED THAT THE PRIMARY FRAME INSTALLER AND THE ROOF INSTALLER HAVE A MINIMUM FIVE (5) YEARS DOCUMENTED EXPERIENCE INSTALLING THIS TYPE OF PRODUCT.

FOR PROPER FIELD INSTALLATION OF THE BUILDING IT IS RECOMMENDED THAT ELECTRIC WIRING, IF REQUIRED, BE RUN THROUGH THE STRUCTURAL MEMBERS BEFORE THE BUILDING IS ERECTED.

### FABRICATOR APPROVALS:

CITY OF PHOENIX, AZ APPROVED FABRICATOR #C08-2010  
 CITY OF LOS ANGELES, CA APPROVED FABRICATOR #1598  
 CITY OF RIVERSIDE, CA APPROVED FABRICATOR #SP06-0033  
 CITY OF HOUSTON, TX APPROVED FABRICATOR #470  
 CLARK COUNTY, NV APPROVED FABRICATOR #264  
 STATE OF UTAH APPROVED FABRICATOR 02008-14

### CERTIFICATES:

MIAMI-DADE COUNTY CERTIFICATE OF COMPETENCY NO. 12-0905.07  
 PCI (POWDER COATING INSTITUTE) 4000 CERTIFIED

## DESIGN CRITERIA:

### GENERAL:

2009 MICHIGAN BUILDING CODE  
 OCCUPANCY CATEGORY: II

### DEAD LOAD:

ROOF DEAD LOAD: 6 PSF  
 FRAME DEAD LOAD: SELF WEIGHT

### LIVE LOAD:

ROOF LIVE LOAD: 20 PSF

### SNOW DESIGN DATA:

GROUND SNOW LOAD (Pg): 30 PSF  
 FLAT ROOF SNOW LOAD (Pf): 25 PSF  
 SNOW EXPOSURE FACTOR (Ce): 1.0  
 SNOW LOAD IMPORTANCE FACTOR (Is): 1.0  
 THERMAL FACTOR (Ct): 1.2

### WIND DESIGN DATA:

BASIC WIND SPEED (V): 90 MPH  
 GUST EFFECT FACTOR (G): 0.85  
 WIND IMPORTANCE FACTOR (Iw): 1.0  
 INTERNAL PRESSURE COEFFICIENT (GCpi): 0  
 WIND EXPOSURE: C

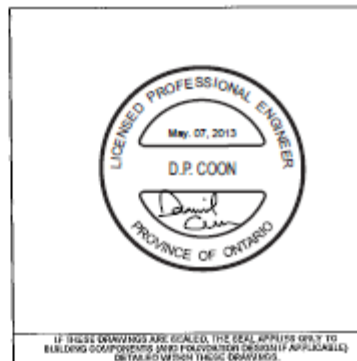
### SEISMIC DESIGN DATA:

STEEL SYSTEMS NOT SPECIFICALLY DETAILED FOR SEISMIC RESISTANCE  
 SEISMIC IMPORTANCE FACTOR (Ie): 1.0  
 SEISMIC DESIGN CATEGORY: C  
 SEISMIC SITE CLASS: D  
 SEE CALCULATIONS FOR ADDITIONAL DATA

### ADDITIONAL CRITERIA:

NONE

**ONTARIO BUILDING CODE REVIEWER'S NOTE:**  
 THE STRUCTURE ILLUSTRATED ON THESE DRAWINGS HAS BEEN DESIGNED IN THE UNITED STATES USING THE MICHIGAN BUILDING CODE AND AMERICAN DESIGN CODES FOR STEEL, CONCRETE, ETC. THE U.S. DESIGNER USES A VERY CONSERVATIVE ESTIMATE OF LOCAL CLIMATIC LOADS FOR DESIGN. SINCE THIS STRUCTURE IS INTENDED FOR CONSTRUCTION IN ONTARIO, IT HAS BEEN CHECKED FOR COMPLIANCE WITH THE CURRENT EDITION OF THE ONTARIO BUILDING CODE AND APPLICABLE REFERENCED DESIGN CODES. TO THE BEST OF OUR KNOWLEDGE, THE STRUCTURE COMPLIES WITH THE FOLLOWING:  
 BUILDING CODE: ONTARIO BUILDING CODE, 2006  
 STRUCTURAL STEEL: CANCSA-516-01  
 LIGHT-GAUGE STEEL: CANCSA-516-01  
 STRUCTURAL CONCRETE: CSA-A23.3-04  
 DESIGN LOADS: O.B.C. 4.1  
 CLIMATIC DESIGN DATA: O.B.C. 95-1, TABLE 1.2  
 FOUNDATION DESIGN: O.B.C. 4.2  
 AS A RESULT OF THE ABOVE NOTED COMPLIANCE CHECKS, ALL REFERENCES ON THESE DRAWINGS TO NON-APPLICABLE CODES MAY BE IGNORED.



PROJECT: PINAFORE PARK  
 PROJECT LOCATION: ST. THOMAS, ON  
 DRAWING: COVER SHEET  
 SHEET: CS  
 DATE: 4/29/2013  
 DRAWN BY: REV LEVEL: A  
 SCALE: 1:1.00  
 (616) 399-1943  
 www.poligon.com  
 by PORTERCORP  
 POLYGON AND ITS LOGO ARE TRADEMARKS OF PORTERCORP AND IN LIAISON HOLLAND, MI 49424

IF THESE DRAWINGS ARE ISSUED, THE SEAL OF THE ENGINEER OR ARCHITECT MUST BE PLACED ON THESE DRAWINGS.  
 IF THESE DRAWINGS ARE ISSUED, THE SEAL OF THE ENGINEER OR ARCHITECT MUST BE PLACED ON THESE DRAWINGS.  
 ONTARIO WITH THESE DRAWINGS.









PINACORE PARK



# Site Furnishings



  
Du Mor



  
Du Mor







**Thank You! Questions?**