



Our Commitment to Quality

Trevalli Homes is dedicated to providing superior-quality comfortable homes that focus on innovative design, excellence in workmanship and customer satisfaction - beyond expectations.

Built on strong family values, Trevalli builds your home as if it were our own. We take great pride in our uncompromising attention to customer service, workmanship and design. Trevalli doesn't just build homes, we enhance lifestyles - turning your dreams into reality. Whatever your lifestyle needs - the choice is yours with Trevalli.

519-515-0454

www.trevallihomes.com

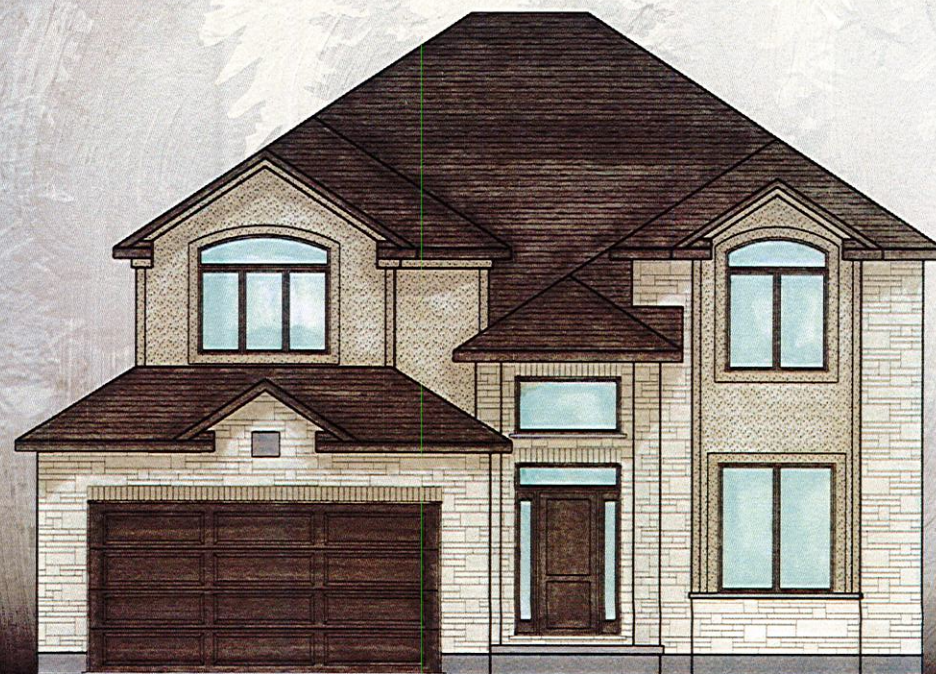
PO Box #21009, 35 Harvard Road, Guelph, ON N1G 3A0

Built BY CRAFTSMEN
DESIGNED FOR YOUR *Lifestyle*

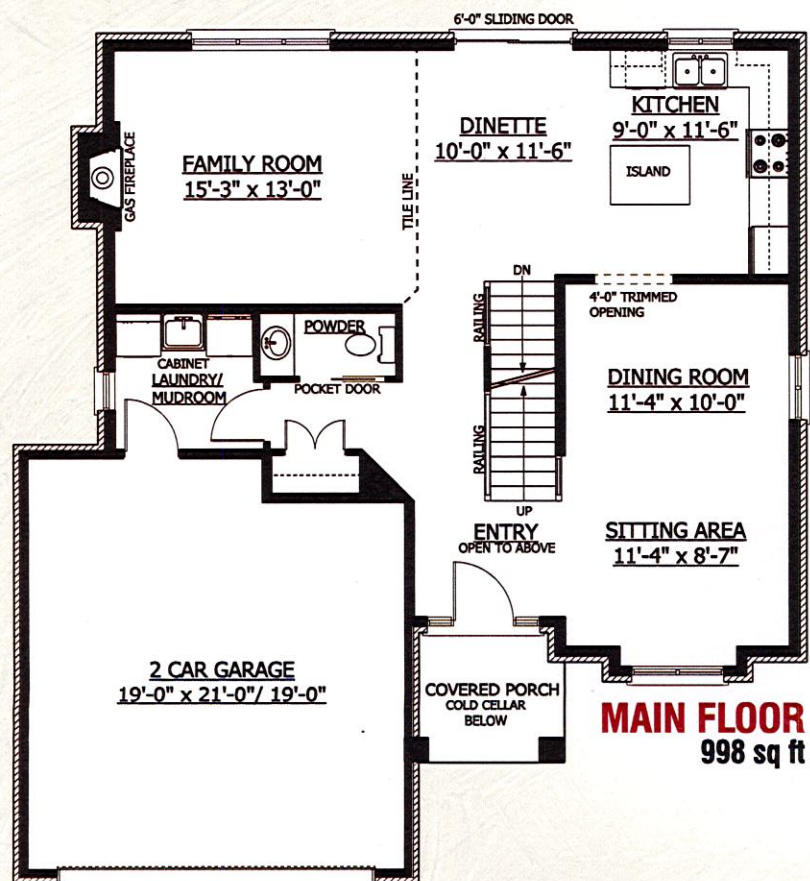
Thames

2088 sq ft + 91 sq ft "open to below"

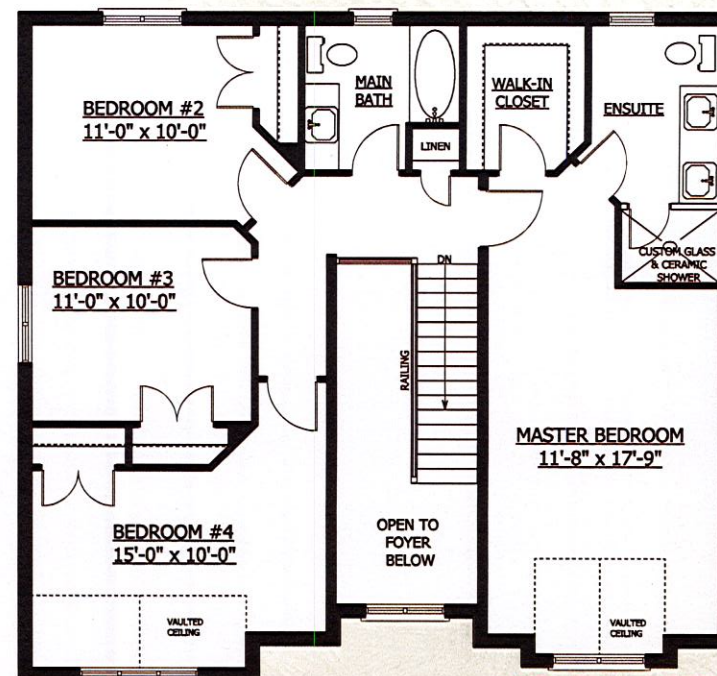
THE OAKS
by TREVALLI HOMES



Thames



2088 sq ft
(Plus 91 Sq. Ft. of "open to below")



*Houses shown with Premium Package features

The Choice is yours with

TREVALLI
Homes Limited

*Materials, specifications, and floor plans are subject to changes without notice. Plan may be built as the mirror image. All house renderings are artist's conceptions. All floor plans are approximate dimensions. Actual usable floor space may vary from the stated floor area E. & O.E. © 2018 Trevalli Homes Limited.



Our Commitment to Quality

Trevalli Homes is dedicated to providing superior-quality comfortable homes that focus on innovative design, excellence in workmanship and customer satisfaction - beyond expectations.

Built on strong family values, Trevalli builds your home as if it were our own.

We take great pride in our uncompromising attention to customer service, workmanship and design. Trevalli doesn't just build homes, we enhance lifestyles - turning your dreams into reality.

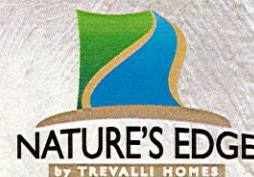
Whatever your lifestyle needs - the choice is yours with Trevalli.

519-515-0454

www.trevallihomes.com

PO Box #21009, 35 Harvard Road, Guelph, ON N1G 3A0

Watford 2
1640 sq ft



Built BY CRAFTSMEN
DESIGNED FOR YOUR *Lifestyle*

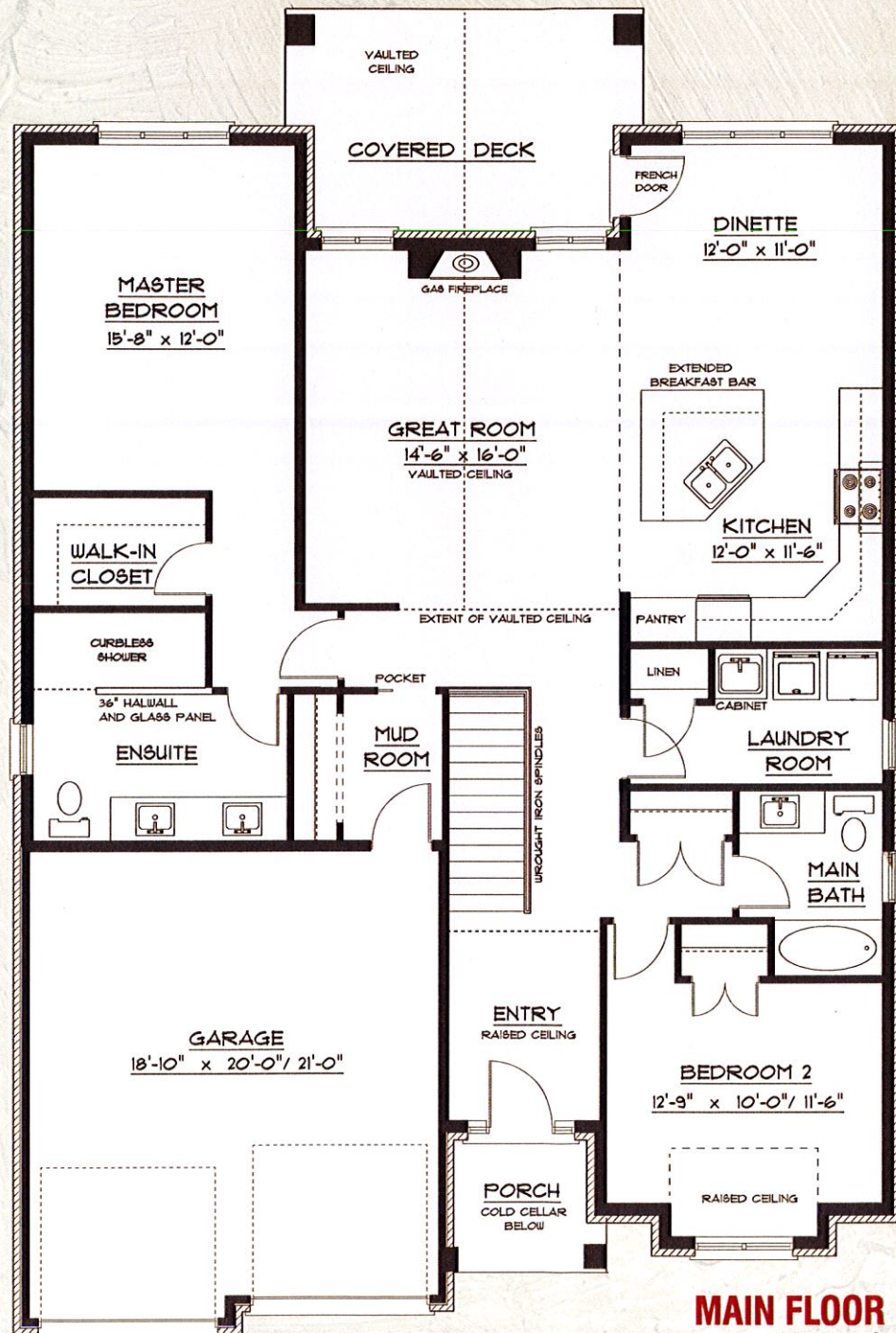


Watford 2

1640 sq ft

The Choice is yours with

TREVALLI
Homes Limited



MAIN FLOOR
1640 sq ft

*Houses shown with Diamond Package features

*Materials, specifications, and floor plans are subject to change without notice. Plan may be built as the mirror image. All house renderings are artist's conceptions. All floor plans are approximate dimensions. Actual usable floor space may vary from the stated floor area. E. & O. E. © 2017 Trevalli Homes Limited.



Our Commitment to Quality

Trevalli Homes is dedicated to providing superior-quality comfortable homes that focus on innovative design, excellence in workmanship and customer satisfaction - beyond expectations.

Built on strong family values, Trevalli builds your home as if it were our own. We take great pride in our uncompromising attention to customer service, workmanship and design. Trevalli doesn't just build homes, we enhance lifestyles - turning your dreams into reality. Whatever your lifestyle needs - the choice is yours with Trevalli.

519-515-0454

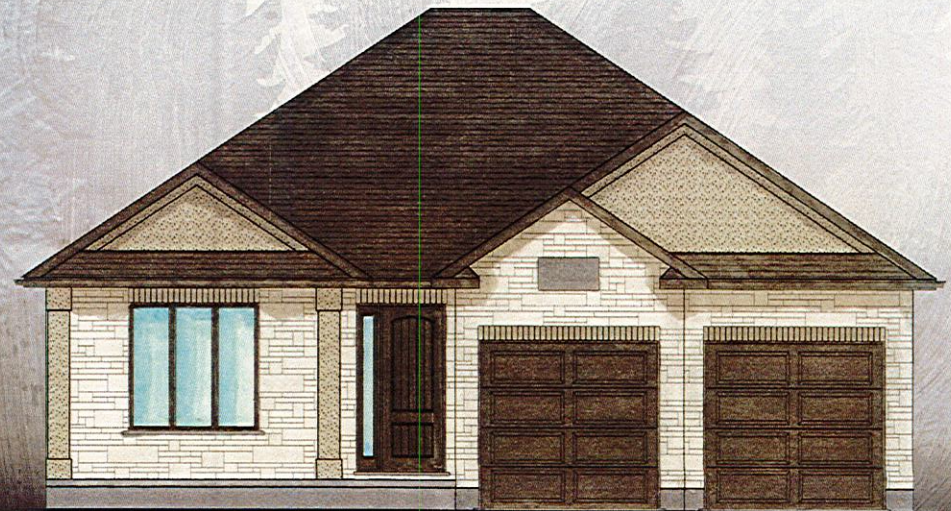
www.trevallihomes.com

PO Box #21009, 35 Harvard Road, Guelph, ON N1G 3A0

Built BY CRAFTSMEN
DESIGNED FOR YOUR *Lifestyle*

Oxford
1516 sq ft

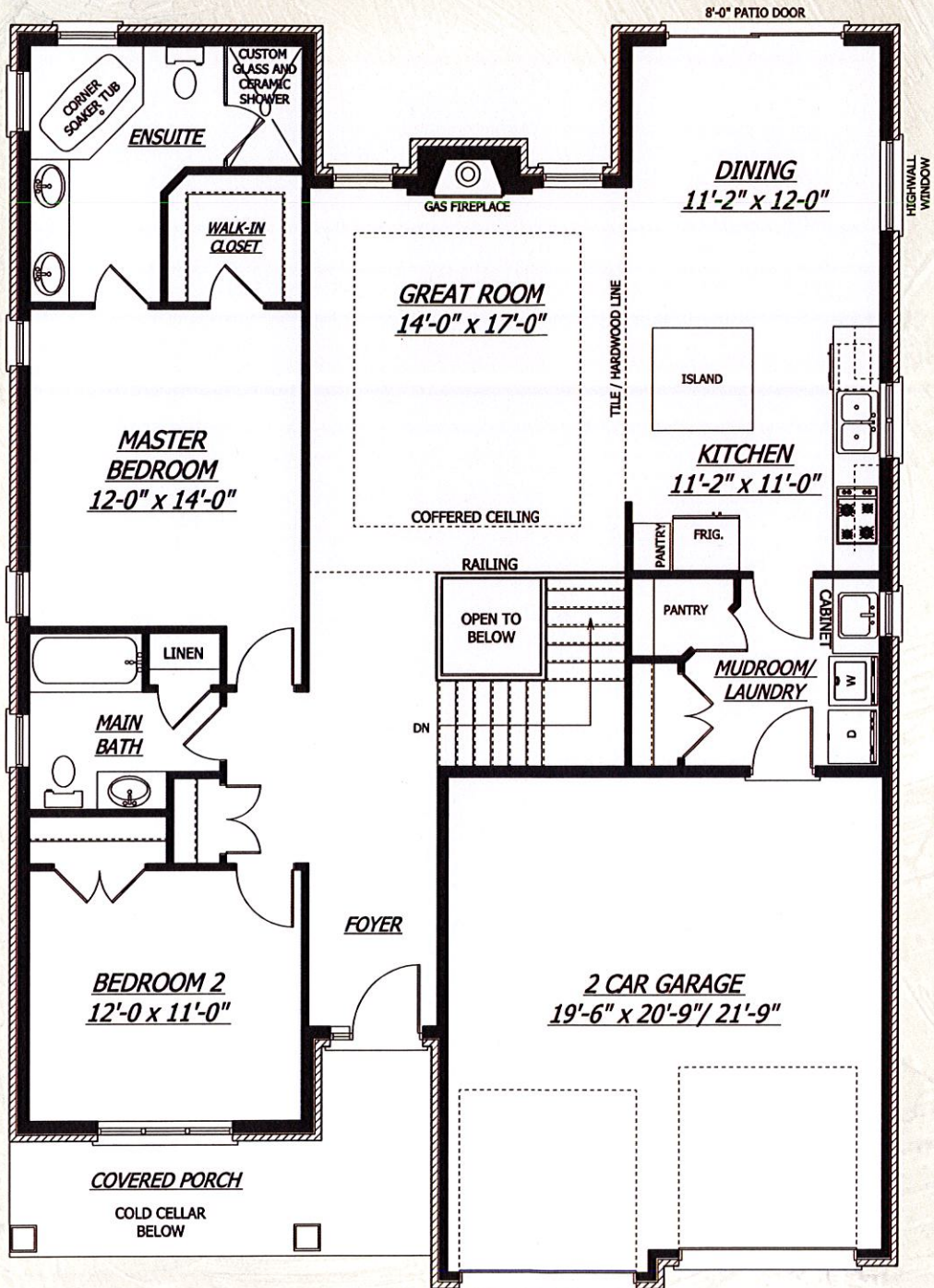
THE OAKS
by TREVALLI HOMES



Oxford

1516 sq ft

The Choice is yours with



MAIN FLOOR
1516 sq ft

*Materials, specifications, and floor plans are subject to change without notice. Plan may be built as the mirror image. All house renderings are artist's conceptions. All floor plans are approximate dimensions. Actual usable floor space may vary from the stated floor area. E. & O. E. © 2018 Trevall Homes Limited.

*Houses shown with Premium Package features